

# Revisions

Revisions B: B-1; B-2, ... On behalf of official Drawing.  
 Revisions 1; 2; 3; 4,..... On behalf of experiment's Drawing.

ISS	Symbol	Description	Date
B		CHE for New Drawing Frame & New PN System	2006/07/11

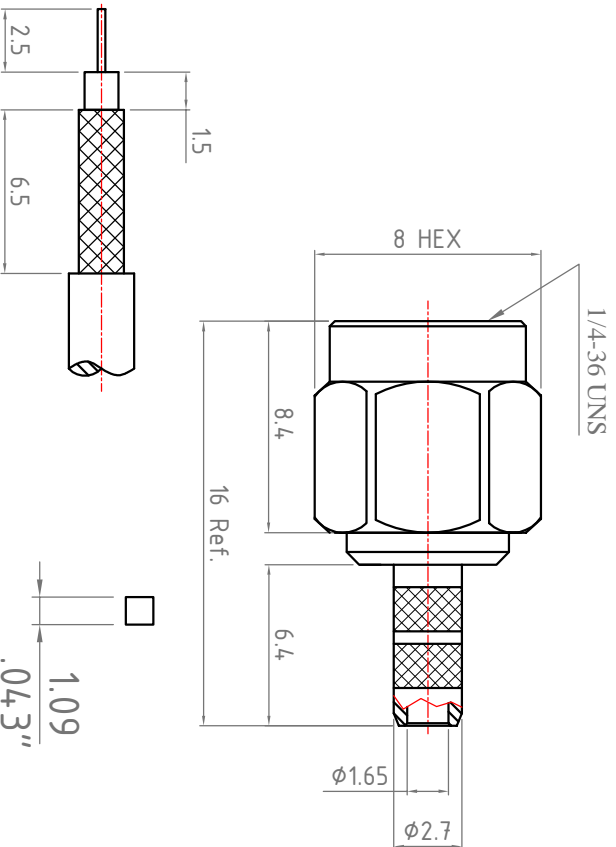
\*Change new drawing frame in Blue Color since 2009/07/01 , to comply with Company CIS Policy.

Outline Drawing

Released

## Note :

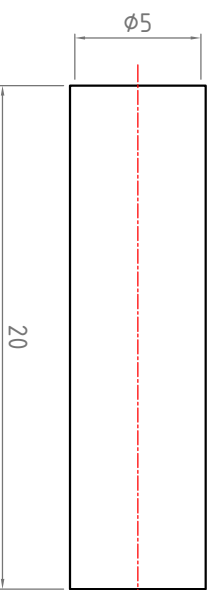
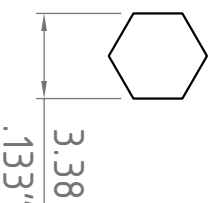
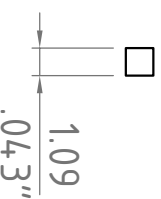
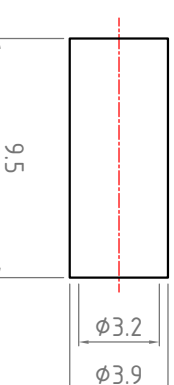
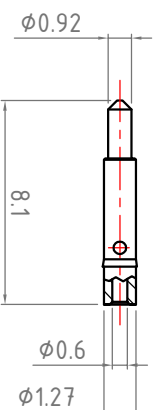
1. Single Crimp: Recommended Dimensions Provided for Ferrule, Dual Crimp; Recommended Dimensions Provided for Ferrule and Center Pin. Please Advise Single/Dual in Advance to Avoid Any Inconsistency.
2. All Metal Materials Are in Compliance with RoHS 2 Directive 2011/65/EU Annex III Section 6 Paragraph.
3. Recommended Crimped Hand Tool : for Center Pin P/N - **HT-301V** for Ferrule P/N - **HT-H116N**



### Recommended Cable Stripping Dimensions

### Recommended Crimping Dimensions for Center Pin

### Recommended Crimping Dimensions for Ferrule



ITEM	Description	Material	Finish	Part Number	QTY
6	Shrinking Tube	PE	Black		
5	Ferrule	Brass	Gold		
4	Pin	Brass	Gold		
3	Insulator	PTFE	None		
2	Body	Brass	Gold		
1	Shell	Brass	Gold		

Scale	Abbr.	Date	Rev.
NTS	ST	2013/07/01	B

**Proprietary Note**  
 This document contains information proprietary to S-Conn, which is either copyrighted or patent applied for, and / or protected by trade secret laws. This document or parts thereof, may not be used, distributed or reproduced in any form by any method, or for any purpose, without the written permission of S-Conn, Taiwan.  
 Customer P/N:

DWG. NO.	TITLE
S101P0G01-M-4	SMA Straight Dual Crimp Plug RG174,188.316;B7805A;URM95 Cable

Drawn	Checked	Approved
<i>Mark</i>		

2019/07/01	2019/07/01	2019/07/01
<i>Mark</i>	<i>Ryan</i>	<i>Y. Sun</i>

ISO 9001 Certified  **S-Conn Enterprise Co., Ltd.**

